

ACE Axcel[®] Clinical Chemistry System

ALFA WASSERMANN
Diagnostic Technologies, LLC



RELIABLE. ACCURATE. ALFA WASSERMANN.
COUNT ON US FOR RESULTS.

From the market leader in POL chemistry testing

ACE Axcel is a reference grade clinical chemistry system that sets the standard for excellence in today's laboratory. With touch screen functionality and an intuitive user interface, the ACE Axcel offers the latest advances to make in-office laboratory testing fast, convenient, and cost-effective.

Reliable in-office laboratory testing with the ACE Axcel allows the physician to diagnose, monitor, and treat patients faster.



The ACE Axcel's test menu provides an effective tool in the diagnosis and management of heart disease, metabolic syndrome, and anemia, as well as other diseases.

Better for Patients

- Fast – Process up to 285 tests per hour with both photometric and potentiometric detection technologies.
- Reliable Results – Avoid sample loss or deterioration caused by transportation to an off-site lab.
- Convenient – Patients don't have to travel to off-site labs for testing. On-site testing facilitates patient compliance, reduces callbacks, and aids prescription management.

Better for Lab Personnel

- Intuitive software and comprehensive user training.
- Increased confidence in test results. Join one of the largest peer groups in POLs, making it easy to compare QC results with other Alfa Wassermann users.
- Award-winning service and support



33"H x 28"L x 26"D

Better for Business

- Keep laboratory revenues in-house.
- Perform single or panel tests from extensive test menu. Open reagent system enables custom assays.
- Increase regulatory compliance with easy-to-operate system.
- Seamlessly connect with Electronic Health Records via Lab Information Systems (LIS).

Designed to meet the needs of your practice

Run your lab more efficiently and more economically with the ACE Axcel. The third generation of the ACE chemistry system improves both patient care and your bottom line.

Smart Features

- Touch screen technology for instinctive control
- Easy-to-use graphical user interface
- Optional barcode scanner automates sample identification and streamlines workflow

Greater Productivity

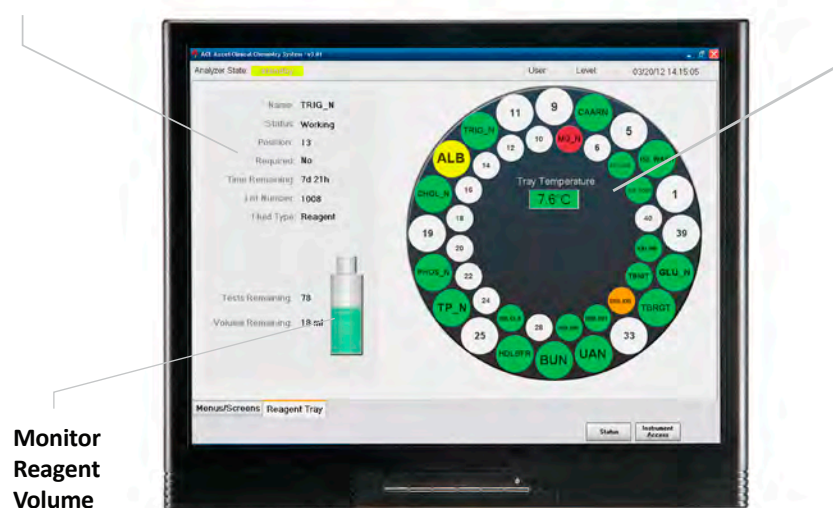
- On-board reagent refrigeration maintains specimen and reagent integrity as well as reducing hands-on time
- Liquid, ready-to-use reagents eliminate prep time, improving operator productivity
- Automatic reagent inventory management
- No external water system, waste drain, freezer, or analyzer cooling unit required

More Intelligence

- Run panels, profiles, or single tests, in any combination at any time
- Create custom panels to meet the needs of your practice
- STAT function allows users to load and prioritize STAT samples during operation for immediate diagnosis and treatment
- Dilution and auto-rerun ensure fast, accurate reporting of abnormal test results without operator intervention
- System calibration automatically monitored
- Seamless integration with Electronic Health Records via Laboratory Information Systems

Check Reagent Status

View On-Board Assays



Monitor Reagent Volume



Touch Screen Technology

The touch screen monitor allows users to quickly and easily navigate the ACE Axcel. Instrument operation takes just the touch of a finger, even while wearing gloves.



Safety With STEP

Closed-tube sampling with the STEP module minimizes operator interaction with the sample, making for a safer workplace. Patient samples remain sealed in blood collection tubes.

Over Two Decades of *Award-Winning* Customer Service



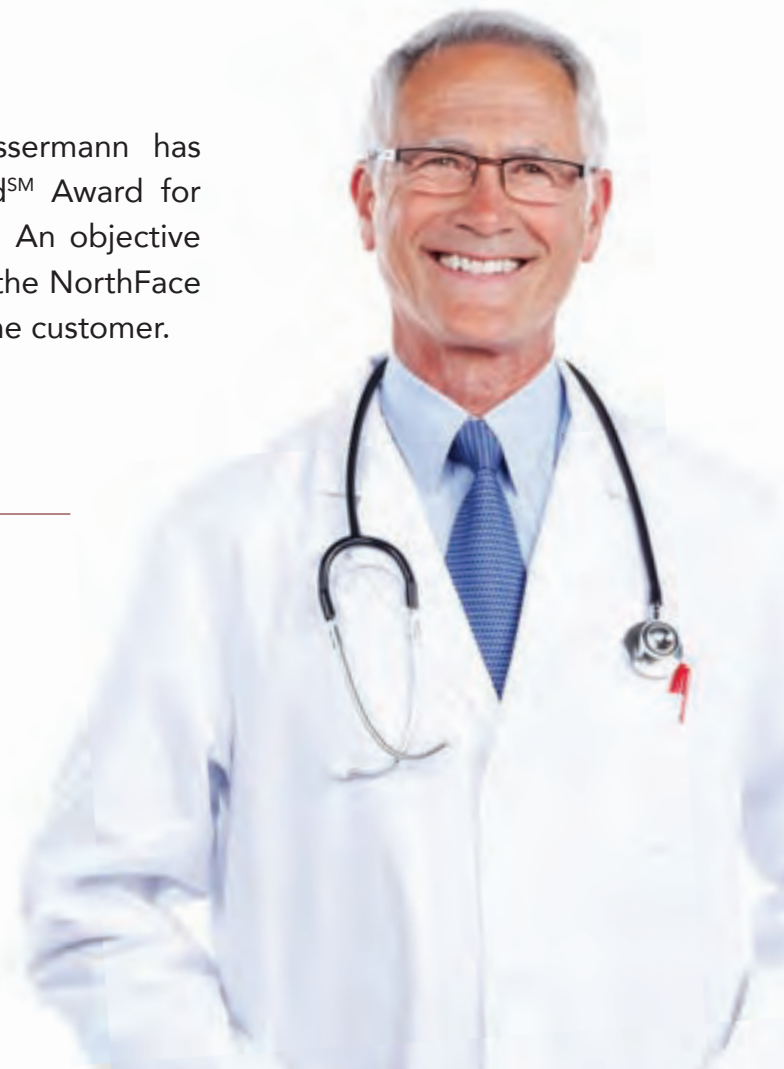
For over two decades, Alfa Wassermann has received the NorthFace ScoreboardSM Award for Excellence in Customer Satisfaction. An objective benchmark for service and support, the NorthFace Award represents the true voice of the customer.

Alfa Wassermann analyzers help you:

- Screen for diseases
- Diagnose and treat sooner
- Monitor progress and adjust treatments as necessary

In today's competitive environment, we recognize that operating a successful and cost-effective practice requires diagnostic testing that is fast, reliable, and accurate.

Your Alfa Wassermann team includes a nationwide network of company-trained engineers and support personnel who provide 24/7 technical support. We bring more than 45 years of manufacturing and service excellence to build and support market-leading clinical chemistry systems.



For more information, please call 1-800-220-4488 or visit www.AlfaWassermannUS.com.

ALFA WASSERMANN
Diagnostic Technologies, LLC

Alfa Wassermann Diagnostic Technologies

4 Henderson Drive
West Caldwell, NJ 07006
Tel: 1-800-220-4488

www.AlfaWassermannUS.com
info@alfawassermannus.com

